

COLIBRI

QUADRAPOL TINY HOMES

23 m²

Sustainable mobile tiny homes made from wood



◆ QUADRAPOL: ABOUT US ◆

Founded in 2008, QUADRAPOL offers extensive know-how and real expertise in the construction of high-end timber-frame homes. In 2014, our architects developed an original range of garden studios, wooden chalets and lodges and Tiny Houses.

Our timber buildings can be used for a wide range of purposes: as a primary or secondary home, as a rental investment, as an office or for any other purpose you require.

Sustainability is central to our approach. Our carefully designed homes are healthy, eco-friendly and sustainable, and meet the highest environmental standards. We also offer water and energy self-sufficiency options that can be adapted to each project.

The COLIBRI, a practical and cosy tiny house on wheels (23 m²), features a lounge area, a fully equipped kitchen and 2 mezzanines, and can sleep 4 to 6 people comfortably in an inviting atmosphere.

◆ QUADRAPOL: OUR ADVANTAGES ◆

◆ SKILLS AND EXPERTISE

Our homes are custom-built by hand in our workshop by our qualified team of craftsmen: carpenters, joiners, cabinet-makers, roofers, fitters, plumbers and electricians.

◆ QUALITY AND DURABILITY

The quality and durability of our products is one of our key concerns. We carefully select the best materials and pay great attention to detail and finish. Upon request, we can also customise your home to suit your needs.

◆ SELF-SUFFICIENCY

As part of our sustainable approach and to get closer to nature, our homes can be fitted with solutions that make them water and energy self-sufficient. For total or partial autonomy for your wooden home.

**manufacturer's warranty, see conditions*

◆ PEACE OF MIND

Discover our guarantees:

1. Guaranteed wood from sustainably managed forests with FSC certification
2. 20-year manufacturer's warranty on the timber-frame structure
3. 2-year electrical installation warranty
4. 2-year manufacturer's warranty on appliances*
5. 2-year lacquered aluminium joinery guarantee
6. 5-year Victron photovoltaic hybrid system warranty*
7. 2-year manufacturer's warranty on the trailer*



COLIBRI

Tiny home, huge comfort

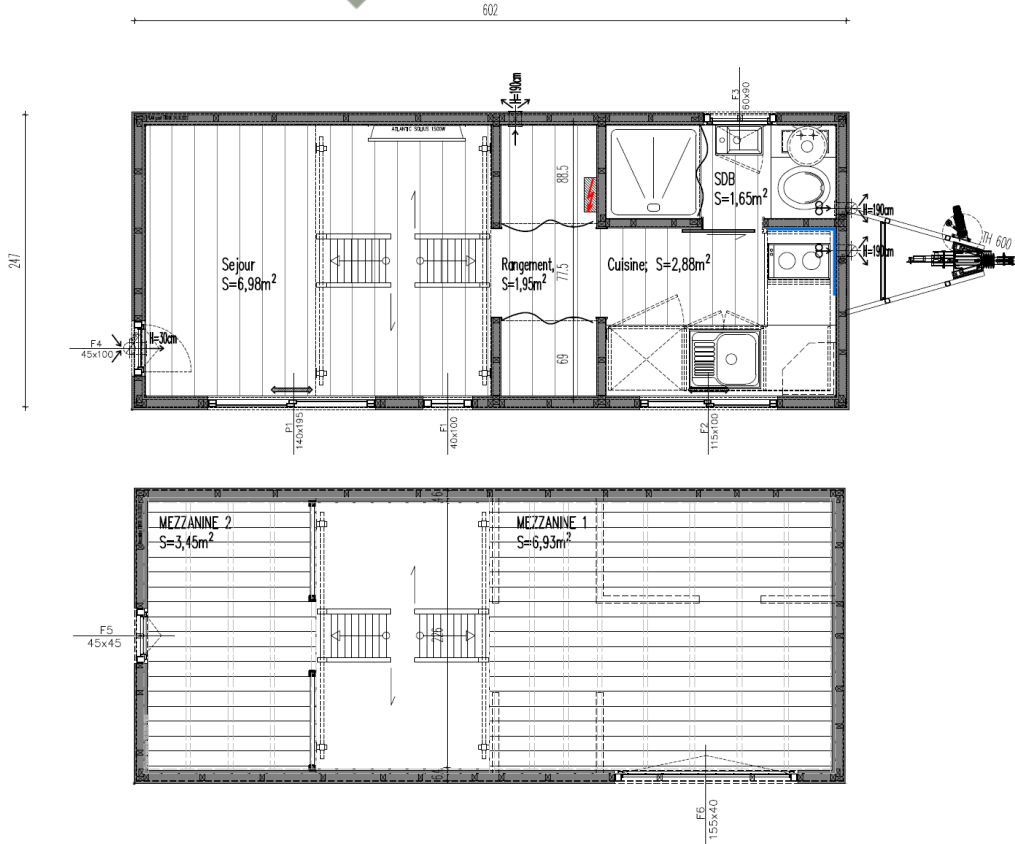
23 m²

- ◆ 1. GENERAL SPECIFICATIONS
- ◆ 2. DESCRIPTION
- ◆ 3. PHOTOS



COLIBRI

1. GENERAL SPECIFICATIONS



1. Downstairs area 13 m^2
2. Mezzanine area 10 m^2
3. Number of beds 4-6
4. Floor length 6,02 m
5. Width 2,47 m
6. CE-approved twin-axle trailer

COLIBRI

◆ 1. FLOOR

Protective aluminium plate under galvanised trailer. 150 mm wood wool insulation and 20 mm polystyrene in the frame structure. Dörken Delta Dawi vapour barrier. 15 mm OSB3. Krono Laminate flooring.

◆ 2. EXTERIOR WALLS

FSC PEFC larch cladding with saturator, Dörken rainscreen, 40 x 60 mm KVH studs, 50 mm Steico wood fibre insulation, Dörken Delta Dawi vapour barrier. Finished with 9 x 110 mm class A pine or spruce panelling with two coats of whitewash.

◆ 3. ROOF

Trapezoidal profiled steel roofing, 10 x 30 mm battens, Dörken rain screen, 80 mm wood fibre insulation, Dörken Delta Dawi vapour barrier. Class A 9 x 110 mm pine or spruce panelling with two coats of whitewash.

◆ 4. JOINERY

Powder-coated aluminium windows and bay windows. 4/16/4 argon gas double glazing.

◆ 5. ELECTRICS AND PLUMBING

Complete Legrand electrical and hydraulic installations.

◆ 6. TRAILER CHASSIS

VLEMMIX 6m galvanised steel trailer, CE approved and registered, with a GVW of 3.5 tonnes. Twin-axles with brakes.

2.DESRIPTION

COLIBRI

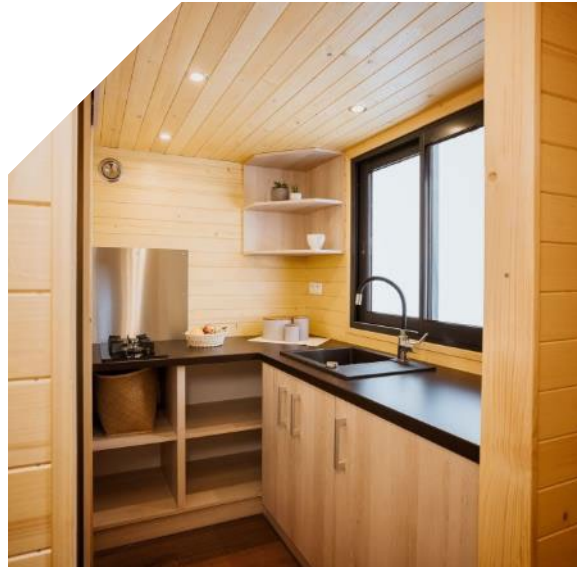
KITCHEN

- Laminate and melamine kitchen units in a range of colours
- Blum sliding systems and fittings
- Choice of solid oak or laminate worktop
- Amica* 95/16-litre fridge
- Candy* 2-burner induction hob
- Ferro* stainless steel black tap*
- 58 x 44 cm Deante resin sink*

EXTRAS

- 4-burner induction hob
- 2 or 4 burner gas hob
- Built-in electric oven
- Washing machine connection
- Worktop extension
- Extractor hood
- Electric combo (hob, oven, dishwasher)
- Gas combo (hob, oven, dishwasher)
- Custom furniture

** similar make or model, subject to availability*



2.DESRIPTION

COLIBRI

BATHROOM

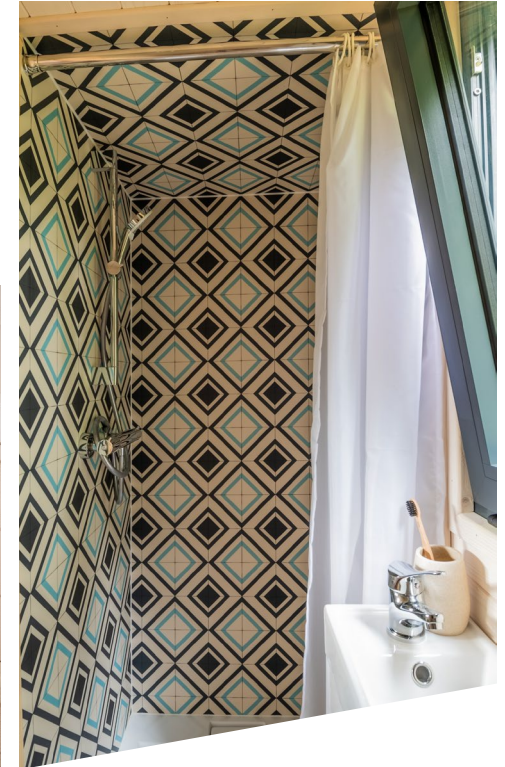
- Solid wood dry toilets
- 400 mm Kolo* washbasin, 680 x 390 x 210 mm
Kolo* cabinet, Deante* tap
- Deante* 5 cm flat shower tray
- Hansgrohe* shower mixer
- Shower curtain and rail
- Ariston* 50L electric water heater

EXTRAS

- Touter hatch for dry toilets
- Roca* standard ceramic toilet
- Biolan separating dry toilets
- Wall-hung toilets
- Ferroli* or Atlantic* gas water heaters
- Glass shower door
- BIOLAN Light greywater treatment kit

**similar make or model, subject to availability*

2.DESRIPTION



COLIBRI

2.DESRIPTION

STANDARD EQUIPMENT

- Solid spruce ladders x2
- Atlantic 1000w radiant panel*
- Wall-mounted sliding door x1
- Dospel ventilation* x2
- Indoor LED spotlights
- Interior wall lights
- Outdoor wall light

EXTRAS

- Cladding in other natural species: Red Cedar, Thermo Ash, Painted Spruce...
- Solid wood step
- Victron* hybrid photovoltaic kit
- Rainwater harvesting system, tank, Pedrollo* pump, filtration
- Wood-burning stove and flue
- Staircases with built-in storage
- Mezzanine nets
- Daikin* reversible air conditioning



**similar make or model, subject to availability*

COLIBRI

3. PHOTOS

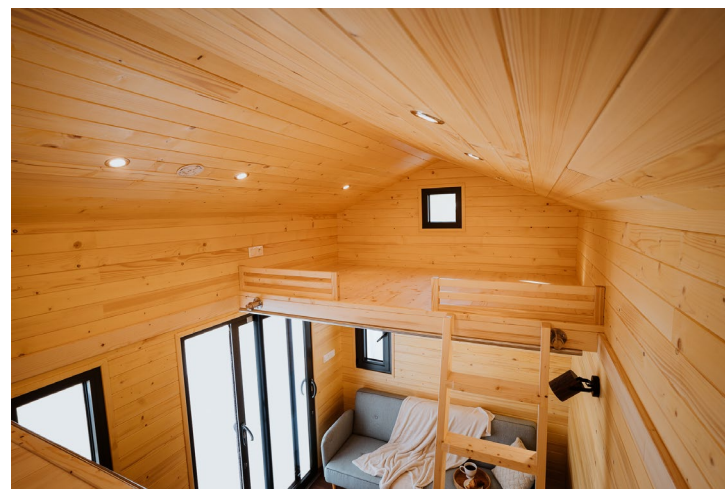


Copyright QUADRAPOL - Registered trademark and models/concepts. Visuals and list of materials are not contractual. This brochure does not constitute an offer within the meaning of the regulations of the French Civil Code.

Quadrapol

COLIBRI

3. PHOTOS



COLIBRI

Your turnkey TINY HOUSE
Larch cladding

3. PHOTOS



Copyright QUADRAPOL - Registered trademark and models/concepts. Visuals and list of materials are not contractual. This brochure does not constitute an offer within the meaning of the regulations of the French Civil Code.

COLIBRI



REPRESENTATIVE OFFICE

160 rue Lawrence Durrell
Bâtiment EOLE
84 140 Avignon
France

SIEGE SOCIAL ET BUREAU D'ETUDES

Ambrozego Grabowskiego 13/6
31-126 Krakwo
Poland

Téléphone: +33 4 65 68 09 17

Email: info@quadrapol.com

www.quadrapol.com

